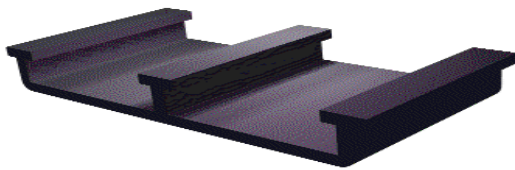


GSE PolyLock-T (HDPE Profile)

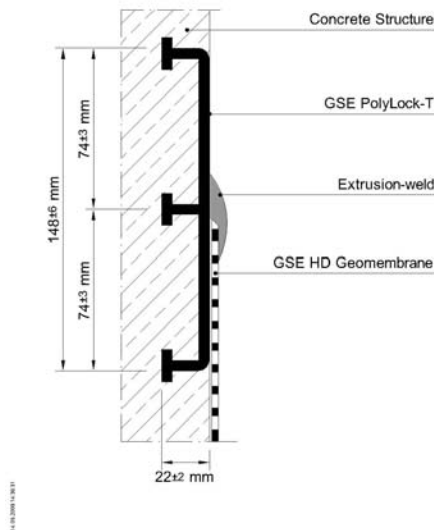
GSE PolyLock-T is a HDPE-Profile for workmanlike attachment of GSE HD geomembranes to concrete structures according to the state of the art. GSE PolyLock-T is rugged, durable, has an excellent chemical resistance and is officially authorized*. The arrangement of 3 parallel T-anchors provides a strong mechanical anchoring into the concrete structure. GSE PolyLock-T can be placed onto the form work before concreting or inserted into wet concrete. Only high quality HDPE raw material is used for this profile thus enabling optimal weldability to GSE geomembrane.



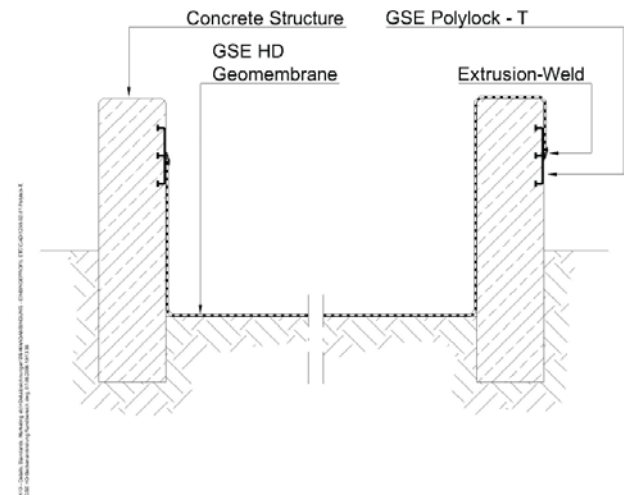
AT THE CORE:
An HDPE-Profile that provides a strong mechanical anchoring to concrete structures.



Polylock-T Specifications	
Properties	Nominal Value
Resin:	HDPE black
Density:	≥ 0.94 g/cm ³
Carbon Black Content:	≥ 2 %
Dimension Stability:	≤ 3 %
Low Temperature Brittleness :	- 70 °C
Dimensions	
Standard Length:	5 m
Width:	approx. 140 mm
Number of T-anchors:	3
Height of T-anchors:	approx. 22 mm
Width of T-anchors:	approx. 13 mm



Typical Polylock embedment into concrete with geomembrane attachment



Typical secondary containment lining showing geomembrane attachment to Polylock-T

GSE is a leading manufacturer and marketer of geosynthetic lining products and services. We've built a reputation of reliability through our dedication to providing consistency of product, price and protection to our global customers.

Our commitment to innovation, our focus on quality and our industry expertise allow us the flexibility to collaborate with our clients to develop a custom, purpose-fit solution.

[DURABILITY RUNS DEEP] For more information on this product and other, please visit us at GSEworld.com, call 49.40.767420 or contact your local sales office.

